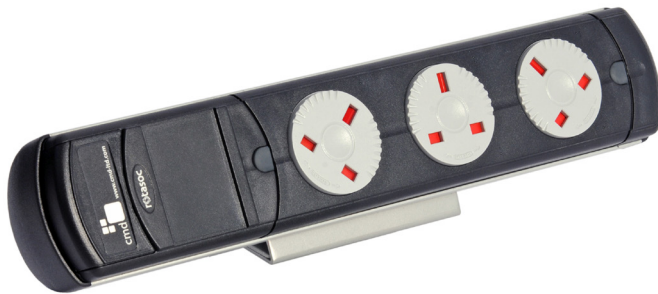


Our horizontal and vertical on desk Rotasoc modules work in conjunction with our under desk Rotasoc system to create the perfect modular power and data solution.



Horizontal Module



Code	Pre-wired with 1m 16A interconnection lead - Standard Earth
RAK001	2 Gang 3.15A Individually Fused Socket Module Black Body Grey Sockets
RAK002	3 Gang 3.15A Individually Fused Socket Module Black Body Grey Sockets
RAK003	4 Gang 3.15A Individually Fused Socket Module Black Body Grey Sockets
RAK010	2 Gang Non-fused Socket Module Black Body Grey Sockets
RAK011	3 Gang Non-fused Socket Module Black Body Grey Sockets
RAK012	4 Gang Non-fused Socket Module Black Body Grey Sockets
Code	Pre-wired with 3m power lead and 13A plug - Standard Earth
RAK020	2 Gang 3.15A Individually Fused Socket Module Black Body Grey Sockets
RAK021	3 Gang 3.15A Individually Fused Socket Module Black Body Grey Sockets
RAK022	4 Gang 3.15A Individually Fused Socket Module Black Body Grey Sockets
RAK030	2 Gang Non-fused Socket Module Black Body Grey Sockets
RAK031	3 Gang Non-fused Socket Module Black Body Grey Sockets
RAK032	4 Gang Non-fused Socket Module Black Body Grey Sockets



***Vertical Module**



Code	Pre-wired with 1m 16A interconnection lead - Standard Earth
RAL003	2 Gang 3.15A Individually Fused Socket Module Black Body Grey Sockets
RAL002	3 Gang 3.15A Individually Fused Socket Module Black Body Grey Sockets
RAL005	2 Gang Non-fused Socket Module Black Body Grey Sockets
RAL006	3 Gang Non-fused Socket Module Black Body Grey Sockets
Code	Pre-wired with 3m power lead and 13A plug - Standard Earth
RAL001	2 Gang 3.15A Individually Fused Socket Module Black Body Grey Sockets
RAL004	3 Gang 3.15A Individually Fused Socket Module Black Body Grey Sockets
Code	Pre-wired with 1m 16A interconnection lead - Clean Earth
RAL012	2 Gang 3.15A Individually Fused Socket Module Black Body Red Sockets
RAL011	3 Gang 3.15A Individually Fused Socket Module Black Body Red Sockets
RAL014	2 Gang Non-fused Socket Module Black Body Red Sockets
RAL015	3 Gang Non-fused Socket Module Black Body Red Sockets
Code	Pre-wired with 3m power lead and 13A plug - Clean Earth
RAL010	2 Gang 3.15A Individually Fused Socket Module Black Body Red Sockets
RAL013	3 Gang 3.15A Individually Fused Socket Module Black Body Red Sockets

*Note: The vertical socket modules can be connected to the desk using a through desk M10 fixing bolt, which is not supplied.

Cables and Connectors

Connector system for use with power modules, giving quick and simple installation.

- 3 pole male and female pre-moulded connectors with 1.5mm² cable up to 7m
- Cable lengths over 7m are 2.5mm² cable due to voltage drop
- Available in black or white
- Connectors comply with BS 5733
- Separate system for dedicated power supplies can be supplied upon request

Starter Cable Plug to Female 3 Pole Connector

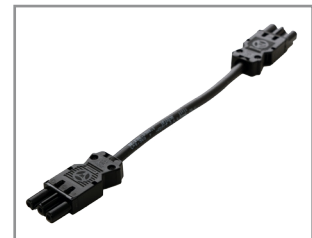
Length	UK Code Black	Schuko Code Black	UK Code White	Schuko Code White
1m	601110GST	600939GST	601210GST	600722GST
1.5m	601115GST	600502GST	601215GST	600723GST
2m	601120GST	600594GST	601220GST	601401GST
3m	601130GST	600037GST	601230GST	600538GST
4m	601140GST	600943GST	601240GST	600726GST
5m	601150GST	600871GST	601250GST	600727GST
6m	601160GST	600718GST	601260GST	600728GST
7m	601170GST	600983GST	601270GST	600729GST
8m	601179GST	600719GST	601280GST*	600730GST
9m	601180GST	600720GST	601290GST*	600731GST
10m	600965GST	600721GST	601299GST*	600732GST



*Note: Subject to availability and lead times.

Male 3 Pole Connector to Female 3 Pole Connector

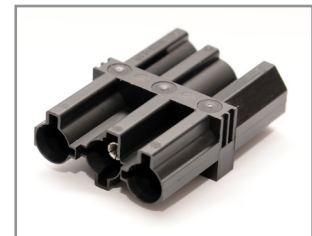
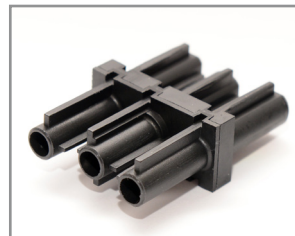
Length	UK Code Black	UK Code White
0.3m	620203GST	620303GST*
0.5m	620205GST	620305GST
1m	620210GST	620310GST
1.5m	620215GST	620315GST*
2m	620220GST	620320GST
3m	620230GST	620330GST
4m	620240GST	620340GST*



*Note: Subject to availability and lead times.

GST/ST Connector Blocks

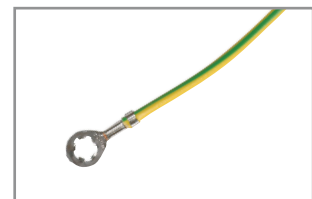
Code	Details
160834GST	Male ST to female GST
160618GST	Male GST to female ST



Earth Kit

Earth lead 1.5mm² with M5 ring terminals, supplied with washers & screws. Other options available on request.

Length	Code
200mm	640199
300mm	640200
500mm	640201



Power Accessories

16 Series Self-Fit Connectors (Pack of 10)

Suitable for terminating cables to produce mains or connector leads. We recommend that only the female is used for mains input lead applications. These connectors are rated at 16 Amps, we recommend that 1.5mm² cable diameter is used for assembly purposes. Sold in packs of 10.

Self fit connector	Code Black	Code White
Male	440633	440642
Female	440632	440641



16 Series Cable Locking Clip

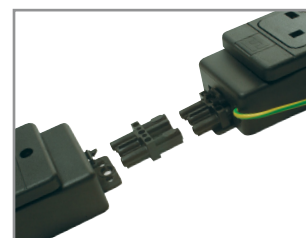
Cable Locking Clips will vary depending on the cables used so please speak to a member of our sales team for more information.



16 Series Connector Blocks

- 1 Male inlet to 1 Female outlet to connect modules together without a cable
- 2 Connector blocks are required per connection
- Colour options, black or white

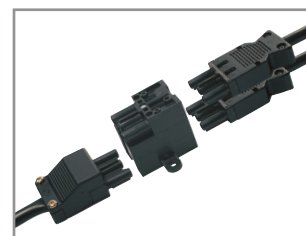
Code Black	Code White
161413GST	161414GST*



16 Series Mains Splitter

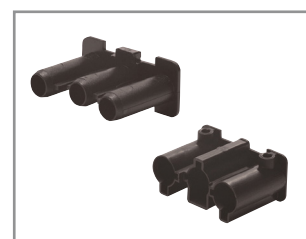
- 1 Male inlet to 3 Female outlets, with fixing lugs, black or white

Mains splitter	Code Black	Code White
Standard	161415GST	161416GST*
Extended in height**	161417GST	161418GST*



16 Series Blanking Plugs

Plug	Code Black	Code White
Male	161419GST*	161420GST*
Female	161421GST*	161422GST*



Fuses

Code	Description
440175	100 x 3.15A Fuses
440176	100 x 5A Fuses



*Note: Subject to availability and lead times. ** (to suit the self fit connectors)

All images are for illustration purposes only.