

rotasoc®

Rotasoc® is widely considered to be the industry standard for customisable under desk power as it includes a comprehensive selection of multi-socket power and data modules with 360° rotatable socket outlets, available in 32 and 16 Amp versions.

Features

- 32A internal copper busbar
- 360° rotatable sockets
- Easy fit modular system
- Integrated power and data
- Quality manufacture and testing (Kite Mark and BSI Certified to BS 5733)
- Standard, low noise / clean earth and dual circuit options
- 32A system conforms to BS 7671 Amd 3 section 543.7 for high protective conductor currents
- Can be used to comply with BS 6396
- Termination to other tap offs are available on request

power
modules



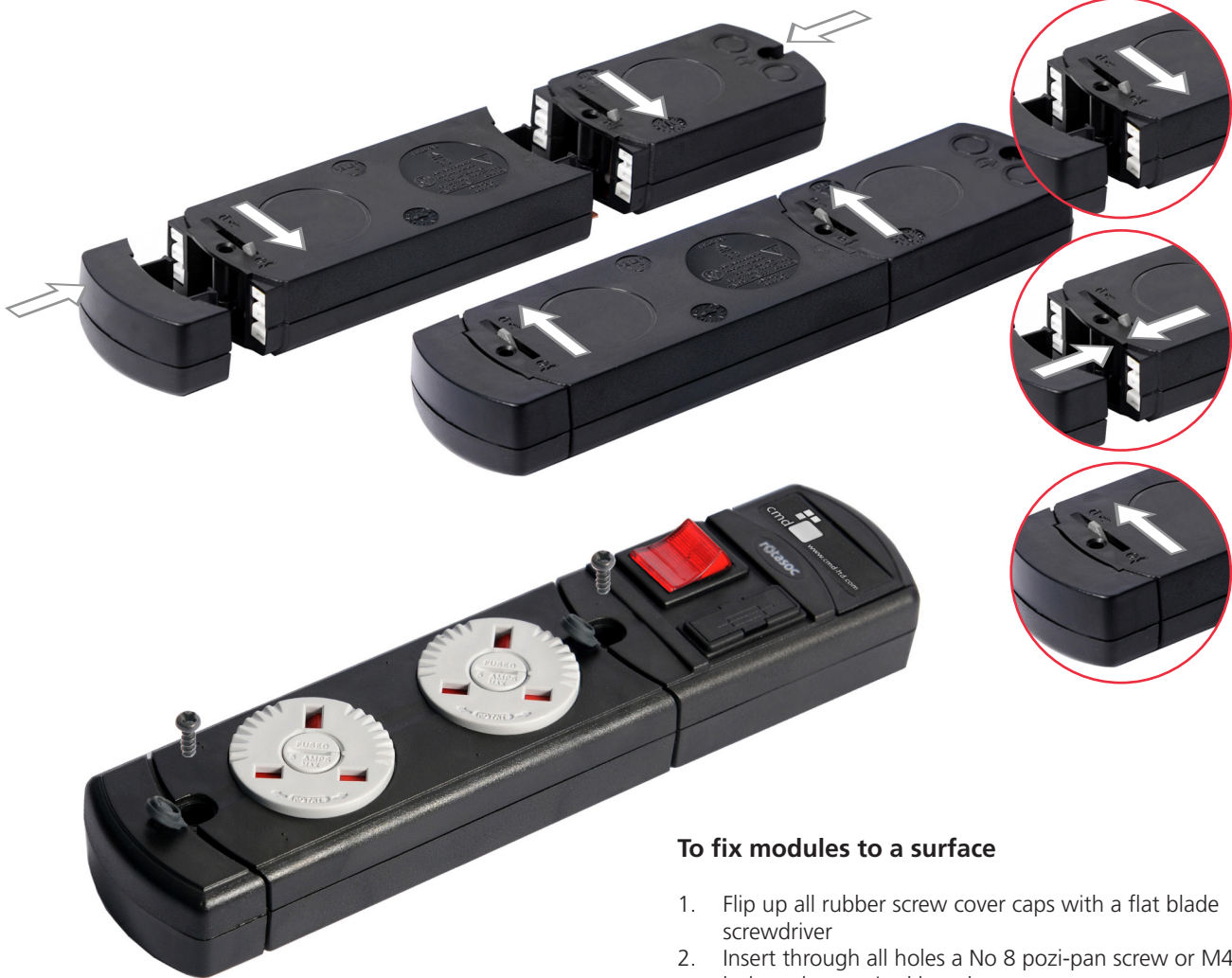
To connect the Rotasoc modules

Connection to be made by a competent person only.

1. Check that both male and female ends have the same colour coded busbar shields
2. Turn modules over and lift the grey cam-lock lever with a small screwdriver into the upright position
3. Locate the male and female ends and push together until fully closed
4. Press the grey cam-lock lever over until flush with the casing to lock the modules together



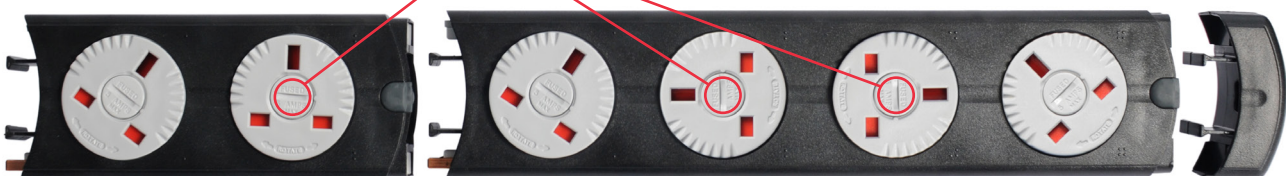
Clean Earth and fused options available



To fix modules to a surface

1. Flip up all rubber screw cover caps with a flat blade screwdriver
2. Insert through all holes a No 8 pozi-pan screw or M4 bolt to the required length
3. Tighten the screw/bolt down to the mounting surface.
4. Replace the rubber screw caps

360° rotating sockets can be positioned as required



Under Desk Power

rotasoc®



32Amp Infeed Module



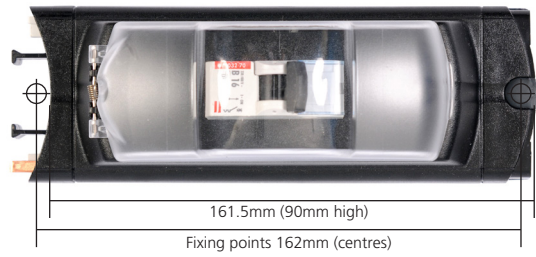
16Amp Infeed Module



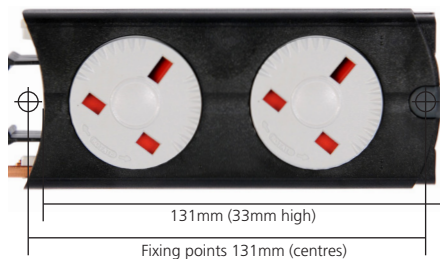
BS 1362 Protection Module



MCB, RCD Protection Module



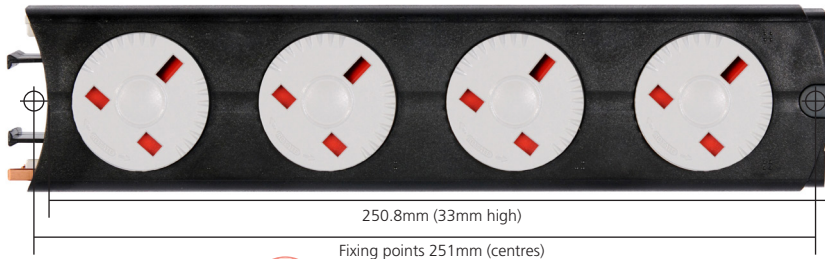
2 Gang Socket Module



3 Gang Socket Module



4 Gang Socket Module



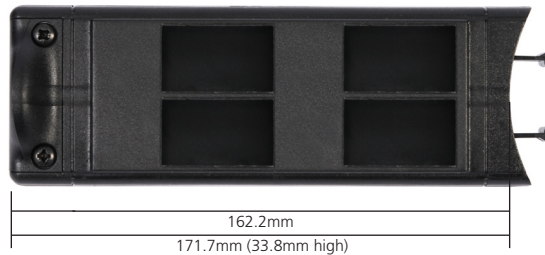
Flexible Interconnect



End Cap



Data Module



power
modules

Build your own Rotasoc® system in 5 easy steps...



Step 1 Infeed

Note: Some 16A infeed may include protection/switching



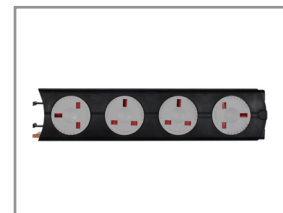
Step 2 Protection/Switching

A variety of protection/switching modules are available



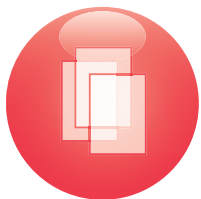
Step 3 Sockets

32A and 16A modules are available with 2, 3 or 4 sockets



Step 4 Flexible Interconnect

Flexible interconnect modules are available in different lengths



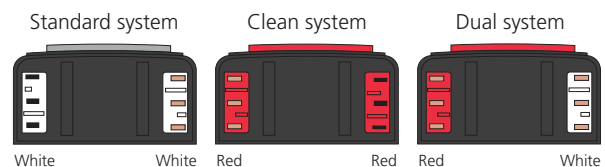
Step 5 Data

Choose data or complete your system with an end cap



Coloured Busbar Shield System

When connecting modules together, ensure that the coloured busbar shields are colour matched and correctly aligned. Do not connect modules if shields are of different colours.



Under Desk Power



Code	32 Amp Infeed 2P+E
RAB301	32A 2P+E Rewirable Infeed Module Standard
RAB111	32A Infeed Module c/w 3m 32A Unfused Metal Conduit Tap Off Betatrak PBSX3323H Standard
RAB112	32A Infeed Module c/w 5m 32A Unfused Metal Conduit Tap Off Betatrak PBSX3325H Standard
RAB113	32A Infeed Module c/w 3m 13A Fused Metal Conduit Tap Off Betatrak PBSX3133H Standard
RAB114	32A Infeed Module c/w 5m 13A Fused Metal Conduit Tap Off Betatrak PBSX3135H Standard
RABX2165	32A Infeed 32A Neutrik Standard



Code	16 Amp Infeed 2P+E
RAB201	16A Rewirable Infeed Module Non-Switched/Non-Fused Standard
RAB202	16A Rewirable Infeed Module Neon Indicator Standard
RAB203	16A Rewirable Infeed Module Neon Switch/Non-Fused Standard
RAB003	16A Infeed Module Non-Switched/Non-Fused c/w 3m lead and 13A BS 1363 Plug Standard
RAB005	16A Infeed Module Non-Switched/Non-Fused c/w 5m lead and 13A BS 1363 Plug Standard
RAB007	16A Infeed Module Neon Indicator c/w 3m lead and 13A BS1363 Plug Standard
RAB009	16A Infeed Module Neon Indicator c/w 5m lead and 13A BS1363 Plug Standard
RAB011	16A Infeed Module Neon Switch/Non-Fused c/w 3m lead and 13A BS 1363 Plug Standard
RAB013	16A Infeed Module Neon Switch/Non-Fused c/w 5m lead and 13A BS 1363 Plug Standard



CMD Tap Off and Infeed



3 Gang Socket Module



Code	Switching/Protection Modules
RAB401	BS 1362 Fuse Protection Module Standard
RAB402	BS 1362 Fuse and Switch Neon Protection Module Standard
RAB403	BS 1362 Fuse and Neon Protection Module Standard
RAB405	32A 30mA RCD Module Standard
RAB420	16A MCB Type "C" Protection Module Standard
RAB440	32A MCB Type "C" Protection Module Standard
RAB450	16A 30mA Residual Current Operated Circuit Breaker Type "C" Protection Module Standard
RAB460	20A 30mA Residual Current Operated Circuit Breaker Type "C" Protection Module Standard
RAB470	32A 30mA Residual Current Operated Circuit Breaker Type "C" Protection Module Standard

Code	Socket Modules
RAB502	2 Gang Non-fused Socket Module Black Body Grey Sockets Standard
RAB503	3 Gang Non-fused Socket Module Black Body Grey Sockets Standard
RAB504	4 Gang Non-fused Socket Module Black Body Grey Sockets Standard
RAB532	2 Gang 3.15A Individually Fused Socket Module Black Body Grey Sockets Standard
RAB533	3 Gang 3.15A Individually Fused Socket Module Black Body Grey Sockets Standard
RAB534	4 Gang 3.15A Individually Fused Socket Module Black Body Grey Sockets Standard
RAB552	2 Gang 5A Individually Fused Socket Module Black Body Grey Sockets Standard
RAB553	3 Gang 5A Individually Fused Socket Module Black Body Grey Sockets Standard
RAB554	4 Gang 5A Individually Fused Socket Module Black Body Grey Sockets Standard

32 Amp

Code	Interconnects
RAB703	0.3m 32A Male to Female Interconnecting Nylon Conduit Standard
RAB705	0.5m 32A Male to Female Interconnecting Nylon Conduit Standard
RAB710	1m 32A Male to Female Interconnecting Nylon Conduit Standard
RAB720	2m 32A Male to Female Interconnecting Nylon Conduit Standard
RAB730	3m 32A Male to Female Interconnecting Nylon Conduit Standard
RAB740	4m 32A Male to Female Interconnecting Nylon Conduit Standard
RAB750	5m 32A Male to Female Interconnecting Nylon Conduit Standard

16 Amp



Code	Interconnects
RAB603	0.3m 16A Male to Female Interconnecting Cable Standard
RAB605	0.5m 16A Male to Female Interconnecting Cable Standard
RAB610	1m 16A Male to Female Interconnecting Cable Standard
RAB620	2m 16A Male to Female Interconnecting Cable Standard
RAB630	3m 16A Male to Female Interconnecting Cable Standard
RAB640	4m 16A Male to Female Interconnecting Cable Standard
RAB650	5m 16A Male to Female Interconnecting Cable Standard
RAB670GST	0.5m 16A Rotasoc Male to GST Female output Other lead lengths available on request

Under Desk Power



Code 32 Amp Infeed 2P+CE+E

RAC301	32A 2P+CE+E Rewirable Infeed Module Clean
RAC111	32A Infeed Module c/w 3m 32A Unfused Metal Conduit Tap Off Betatrak PBCX4323H Clean
RAC112	32A Infeed Module c/w 5m 32A Unfused Metal Conduit Tap Off Betatrak PBCX4325H Clean
RACX2134	32A Infeed 32A Neutrik Clean

power
modules



Code 16 Amp Infeed 2P+CE

RAC201	16A Rewirable Infeed Module Non-Switched/Non-Fused Clean
RAC203	16A Rewirable Infeed Module Neon Switch/Non-Fused Clean
RAC003	16A Infeed Module Non-Switched/Non-Fused c/w 3m lead and 13A BS 1363 Plug Clean
RAC005	16A Infeed Module Non-Switched/Non-Fused c/w 5m lead and 13A BS 1363 Plug Clean
RAC007	16A Infeed Module Neon Indicator c/w 3m lead and 13A BS1363 Plug Clean



RCBO Protection Module



Flexible Interconnect



Code	Switching/Protection Modules
RAC401	BS 1362 Fuse Protection Module Clean
RAC402	BS 1362 Fuse and Switch Neon Protection Module Clean
RAC403	BS 1362 Fuse and Neon Protection Module Clean
RAC405	32A 30mA RCD Module Clean
RAC420	16A MCB Type "C" Protection Module Clean
RAC440	32A MCB Type "C" Protection Module Clean
RAC450	16A 30mA Residual Current Operated Circuit Breaker Type "C" Protection Module Clean
RAC460	20A 30mA Residual Current Operated Circuit Breaker Type "C" Protection Module Clean
RAC470	32A 30mA Residual Current Operated Circuit Breaker Type "C" Protection Module Clean

Code	Socket Modules
RAC502	2 Gang Non-fused Socket Module Black Body Red Sockets Clean
RAC503	3 Gang Non-fused Socket Module Black Body Red Sockets Clean
RAC504	4 Gang Non-fused Socket Module Black Body Red Sockets Clean
RAC532	2 Gang 3.15A Individually Fused Socket Module Black Body Red Sockets Clean
RAC533	3 Gang 3.15A Individually Fused Socket Module Black Body Red Sockets Clean
RAC534	4 Gang 3.15A Individually Fused Socket Module Black Body Red Sockets Clean
RAC552	2 Gang 5A Individually Fused Socket Module Black Body Red Sockets Clean
RAC553	3 Gang 5A Individually Fused Socket Module Black Body Red Sockets Clean
RAC554	4 Gang 5A Individually Fused Socket Module Black Body Red Sockets Clean

32 Amp

Code	Interconnects
RAC703	0.3m 32A Male to Female Interconnecting Nylon Conduit Clean
RAC705	0.5m 32A Male to Female Interconnecting Nylon Conduit Clean
RAC710	1m 32A Male to Female Interconnecting Nylon Conduit Clean
RAC720	2m 32A Male to Female Interconnecting Nylon Conduit Clean
RAC730	3m 32A Male to Female Interconnecting Nylon Conduit Clean

16 Amp



Code	Interconnects
RAC603	0.3m 16A Male to Female Interconnecting Cable Clean
RAC605	0.5m 16A Male to Female Interconnecting Cable Clean
RAC610	1m 16A Male to Female Interconnecting Cable Clean
RAC620	2m 16A Male to Female Interconnecting Cable Clean
RAC630	3m 16A Male to Female Interconnecting Cable Clean
RAC640	4m 16A Male to Female Interconnecting Cable Clean
RAC650	5m 16A Male to Female Interconnecting Cable Clean
RAC670GST	0.5m 16A Rotasoc Male to GST Female output Other lead lengths available on request

Under Desk Power



Code	32A Infeeds 4P+E+CE
RAD301	32A 4P+E+CE Rewirable Infeed Module Dual
RAD111	32A Infeed Module c/w 3m 28A Unfused Metal Conduit Tap Off Betatrak PBDX7283H Dual
RAD112	32A Infeed Module c/w 5m 28A Unfused Metal Conduit Tap Off Betatrak PBDX7285H Dual

Code	16A Infeeds 4P+E+CE
RAD201	16A Rewirable Infeed Module Non-Switched/Non-Fused Dual
RAD202	16A Rewirable Infeed Module 2 x Neon Indicator Dual
RAD203	16A Rewirable Infeed Module 2 x Neon Switch/Non-Fused Dual
RAD003	16A Rewirable Infeed Module Non-Switched/Non-Fused c/w 2 x 3m lead and 13A BS 1363 Plug Dual
RAD005	16A Infeed Module Non-Switched/Non-Fused c/w 2 x 5m lead and 13A BS 1363 Plug Dual
RAD007	16A Infeed Module 2 x Neon Indicator c/w 2 x 3m lead and 13A BS 1363 Plug Dual
RAD009	16A Infeed Module 2 x Neon Indicator c/w 2 x 5m lead and 13A BS 1363 Plug Dual
RAD011	16A Infeed Module 2 x Neon Switch/Non-Fused c/w 2 x 3m lead and 13A BS 1363 Plug Dual
RAD013	16A Infeed Module 2 x Neon Switch/Non-Fused c/w 2 x 5m lead and 13A BS 1363 Plug Dual



Code	Switching/Protection Modules
RAD401	2 x BS 1362 Fuse Protection Module Dual
RAD420	2 x 16A MCB Type "C" Protection Module Dual
RAD440	2 x 32A MCB Type "C" Protection Module Dual



Code	Socket Modules
RAD502	2 Gang Non-fused Socket Module - Black Body Grey Sockets Standard/Clean Bypass Dual
RAD503	3 Gang Non-fused Socket Module - Black Body Grey Sockets Standard/Clean Bypass Dual
RAD504	4 Gang Non-fused Socket Module - Black Body Grey Sockets Standard/Clean Bypass Dual
RAD512	2 Gang Non-fused Socket Module - Black Body Red Sockets Clean/Standard Bypass Dual
RAD513	3 Gang Non-fused Socket Module - Black Body Red Sockets Clean/Standard Bypass Dual
RAD514	4 Gang Non-fused Socket Module - Black Body Red Sockets Clean/Standard Bypass Dual



Code	Socket Modules (cont)
RAD532	2 Gang 3.15A Individually Fused Socket Module - Black Body Grey Sockets Standard/Clean Bypass Dual
RAD533	3 Gang 3.15A Individually Fused Socket Module - Black Body Grey Sockets Standard/Clean Bypass Dual
RAD534	4 Gang 3.15A Individually Fused Socket Module - Black Body Grey Sockets Standard/Clean Bypass Dual
RAD542	2 Gang 3.15A Individually Fused Socket Module - Black Body Red Sockets Clean/Standard Bypass Dual
RAD543	3 Gang 3.15A Individually Fused Socket Module - Black Body Red Sockets Clean/Standard Bypass Dual
RAD544	4 Gang 3.15A Individually Fused Socket Module - Black Body Red Sockets Clean/Standard Bypass Dual
RAD552	2 Gang 5A Individually Fused Socket Module - Black Body Grey Sockets Standard/Clean Bypass Dual
RAD553	3 Gang 5A Individually Fused Socket Module - Black Body Grey Sockets Standard/Clean Bypass Dual
RAD554	4 Gang 5A Individually Fused Socket Module - Black Body Grey Sockets Standard/Clean Bypass Dual
RAD562	2 Gang 5A Individually Fused Socket Module - Black Body Red Sockets Clean/Standard Bypass Dual
RAD563	3 Gang 5A Individually Fused Socket Module - Black Body Red Sockets Clean/Standard Bypass Dual
RAD564	4 Gang 5A Individually Fused Socket Module - Black Body Red Sockets Clean/Standard Bypass Dual

32 Amp

Code	Interconnects
RAD703	0.3m 32A Male to Female Interconnecting Nylon Conduit Dual
RAD705	0.5m 32A Male to Female Interconnecting Nylon Conduit Dual
RAD710	1m 32A Male to Female Interconnecting Nylon Conduit Dual
RAD720	2m 32A Male to Female Interconnecting Nylon Conduit Dual
RAD730	3m 32A Male to Female Interconnecting Nylon Conduit Dual
RAD740	4m 32A Male to Female Interconnecting Nylon Conduit Dual
RAD750	5m 32A Male to Female Interconnecting Nylon Conduit Dual

16 Amp

Code	Interconnects
RAD603	0.3m 16A Male to Female Interconnecting Cable Dual
RAD605	0.5m 16A Male to Female Interconnecting Cable Dual
RAD610	1m 16A Male to Female Interconnecting Cable Dual
RAD620	2m 16A Male to Female Interconnecting Cable Dual
RAD630	3m 16A Male to Female Interconnecting Cable Dual
RAD640	4m 16A Male to Female Interconnecting Cable Dual
RAD650	5m 16A Male to Female Interconnecting Cable Dual

Data and Accessories



Code	Data Communication Modules - Socket Connection
RAF108	4 Way Communication Module 37/22mm cut outs c/w conduit entry end cap

Code	Data Communication Modules - Stand Alone
RAF214	4 Way Communication Module 37/22mm cut outs
RAF215	4 Way Communication Module 37/22mm cut outs c/w conduit entry end cap

Code	Accessories
RAZ001	End Cap
RAZ020	250mm x 4.0mm Earth Cable Kit c/w fixings for 32A Infeed
RAZ010	250mm x 1.5mm Earth Cable Kit c/w fixings for 16A Infeed